



chargifi[®]  GUARDIAN

GET SMART ABOUT DEPLOYING WIRELESS POWER

CHARGIFI GUARDIAN

VENUE STATUS OVERVIEW

Currently, there are:

12 Operational | 3 Offline

REBOOT PROTOCOL

Select a venue to begin the **Reboot Protocol** [\(what is this?\)](#)

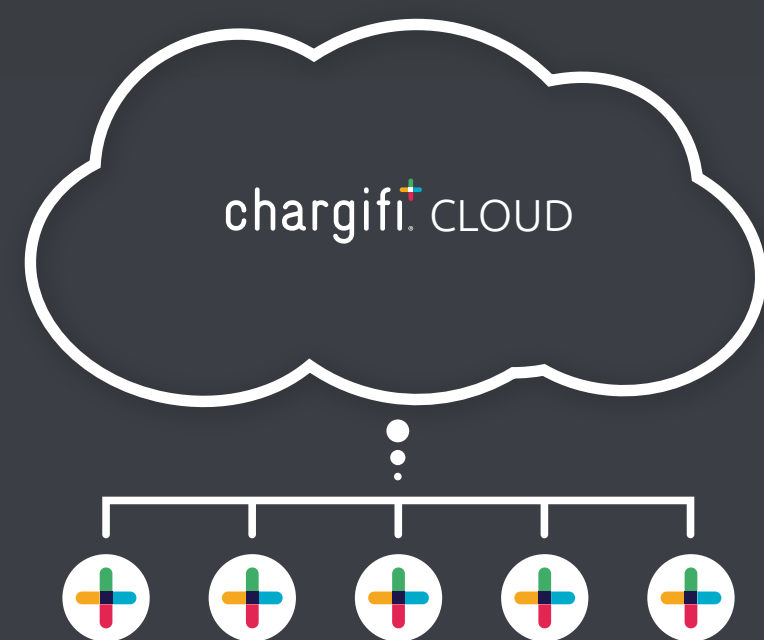
SELECTED:
Nothing selected yet.

Like with public wifi deployments, a software management layer for wireless charging presents a tremendous opportunity for higher quality installations, better user experience, and happier clients.

Drawing upon our experience as the world's first implementer of AirFuel-Resonant™ wireless charging, we have released our networked service layer tools, so Managed Service Providers (MSPs) can deliver best-in-class wireless charging to their clients.



KEY FEATURES



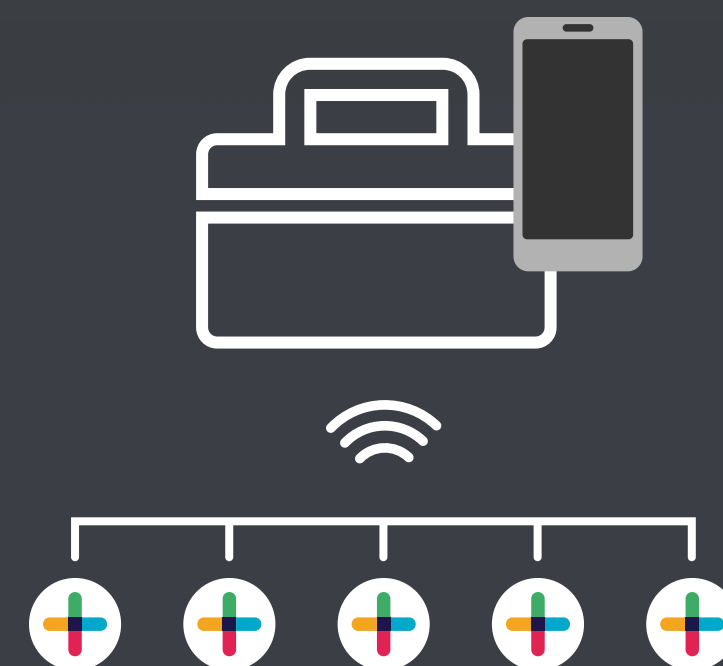
Cloud-Hosted Infrastructure

Manage your clients' wireless power deployments in the cloud from a web browser, allowing you track and control them from anywhere. No software to download or maintain.



Self-Healing Hotspots

Guardian makes your hotspots smart. Hotspots report vitals and usage metrics in real-time, and our self-healing network can fix transmitters remotely, reducing the need for expensive truck-roll.



Deploy and Forget

Receive real-time alerts when Guardian detects abnormalities, connectivity outages, and defected hardware, alerting you to problems before your clients or their customers do.

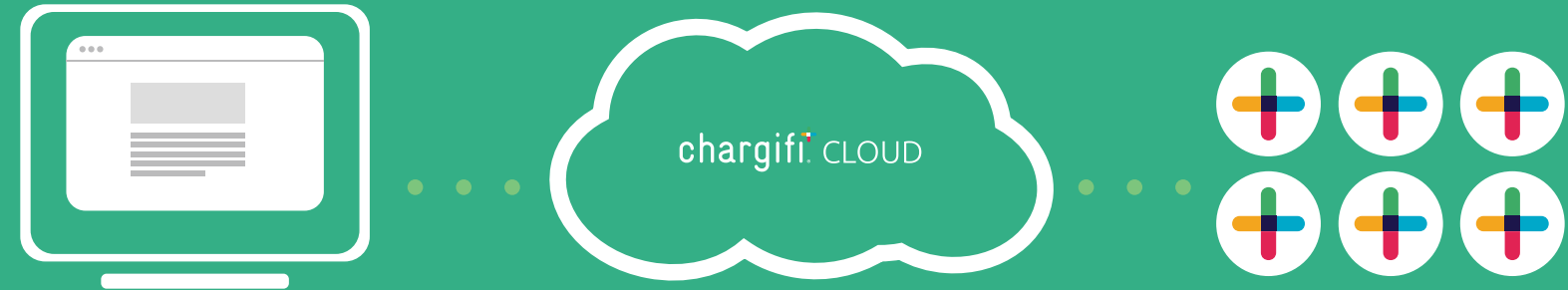


Optimize Installs + Upsell Clients

Track usage patterns in your clients' venues over time, giving you the data and opportunity to upsell additional hotspots in high-traffic areas.

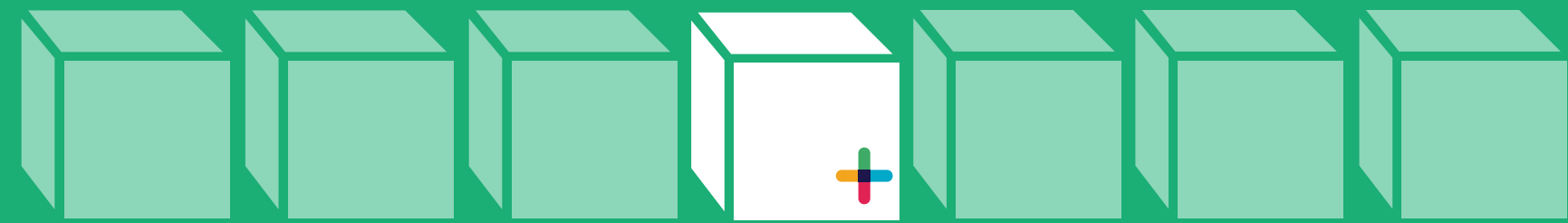


REDUCE YOUR OPERATING EXPENSES



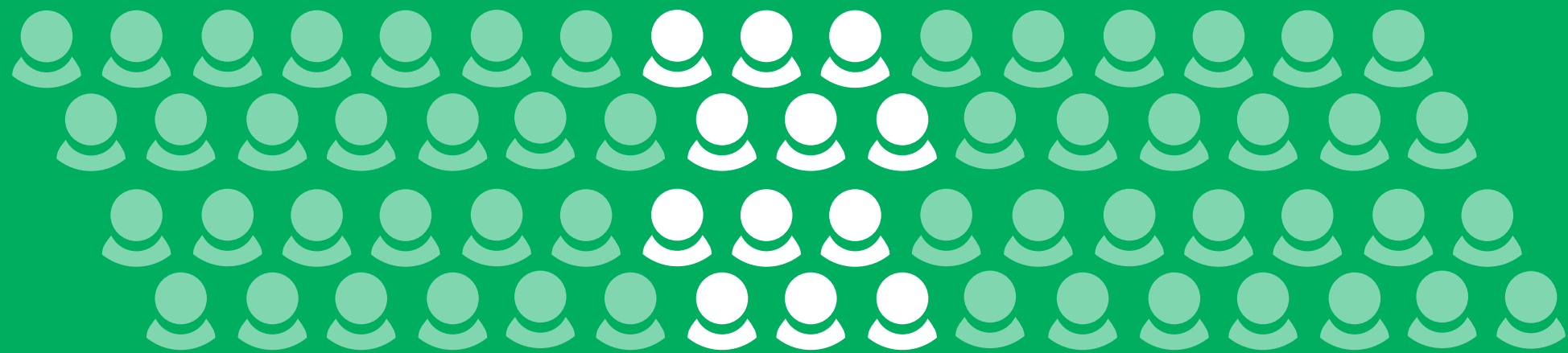
No Infrastructure Costs

Utilize Chargifi's cloud-hosted management infrastructure, eliminating the need to build and maintain your own cloud.



No Extra Hardware

No hardware is required. There are no controllers or other management devices to install at a client site or back at your HQ. All you need is an approved, Chargifi-enabled transmitter.



Lower Staff Requirements

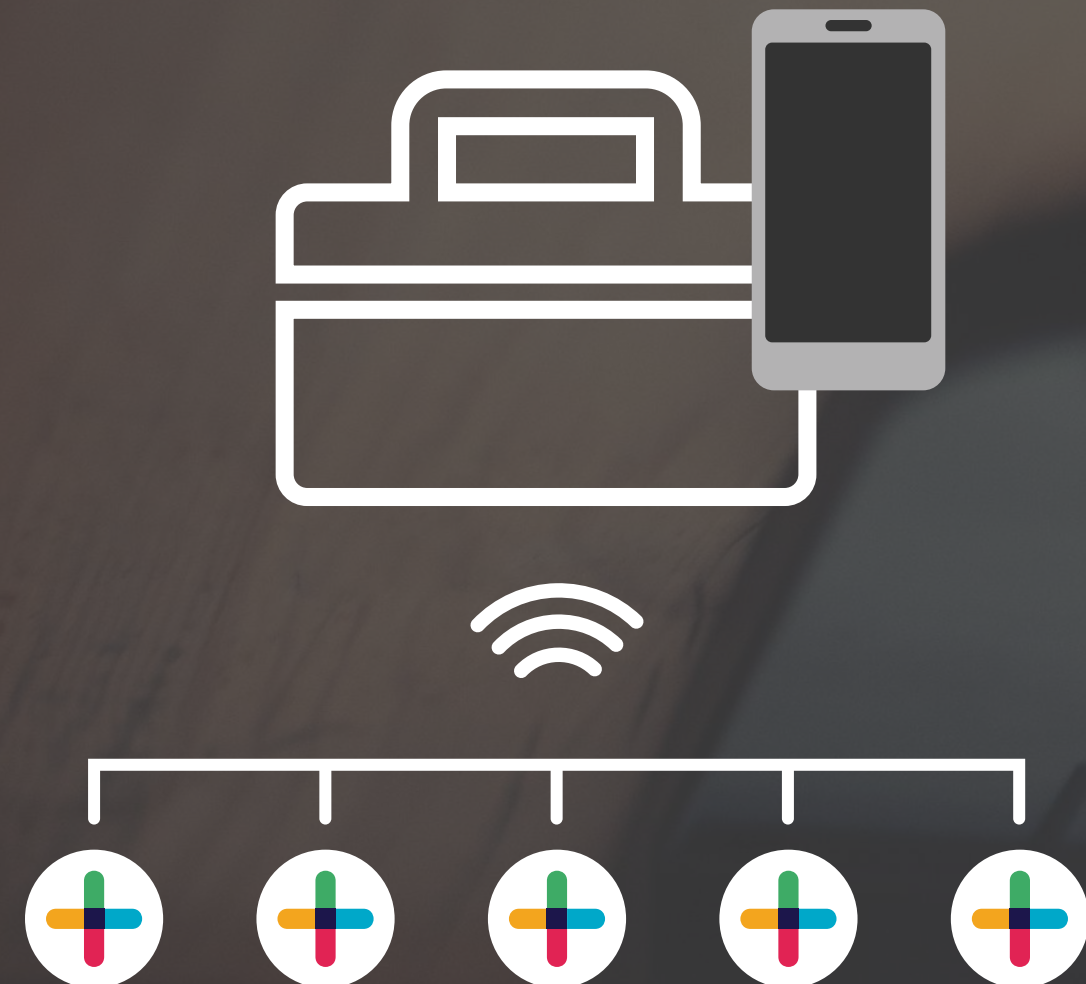
Guardian's intuitive network management tools reduce staffing requirements. The self-healing engine recognizes hotspot abnormalities and restores deployments to full health with little or no human involvement. This dramatically reduces expensive truck roll and the need for human tech support.



Streamlined Cost Model

A single pricing model includes maintenance, support, and ongoing feature releases.





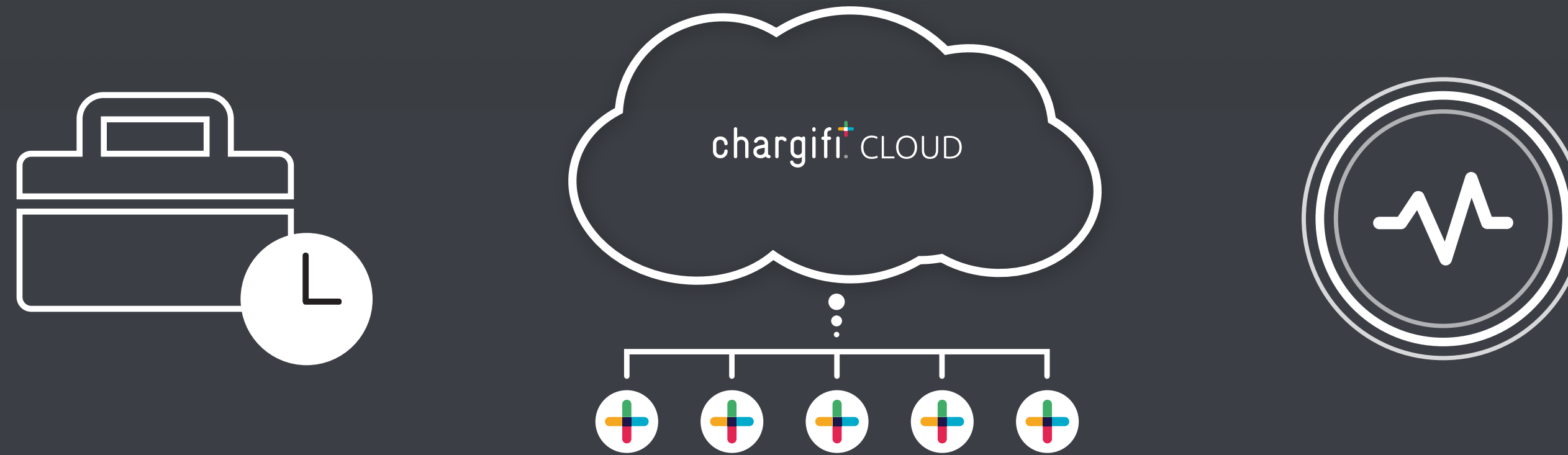
Deploy and Forget

From the moment a deployment is activated, an MSP's focus turns to ensuring the client's system remains healthy, and that support and maintenance costs are kept to a minimum.

Guardian's smart hotspots report vitals and usage metrics in real-time, and our intuitive web dashboard and alerts make it easy to identify spots that require attention before your clients or their guests do. Maximize the delivery of your SLAs with minimal effort on your part.



STAYS NEW, GETS BETTER



Seamless Updates

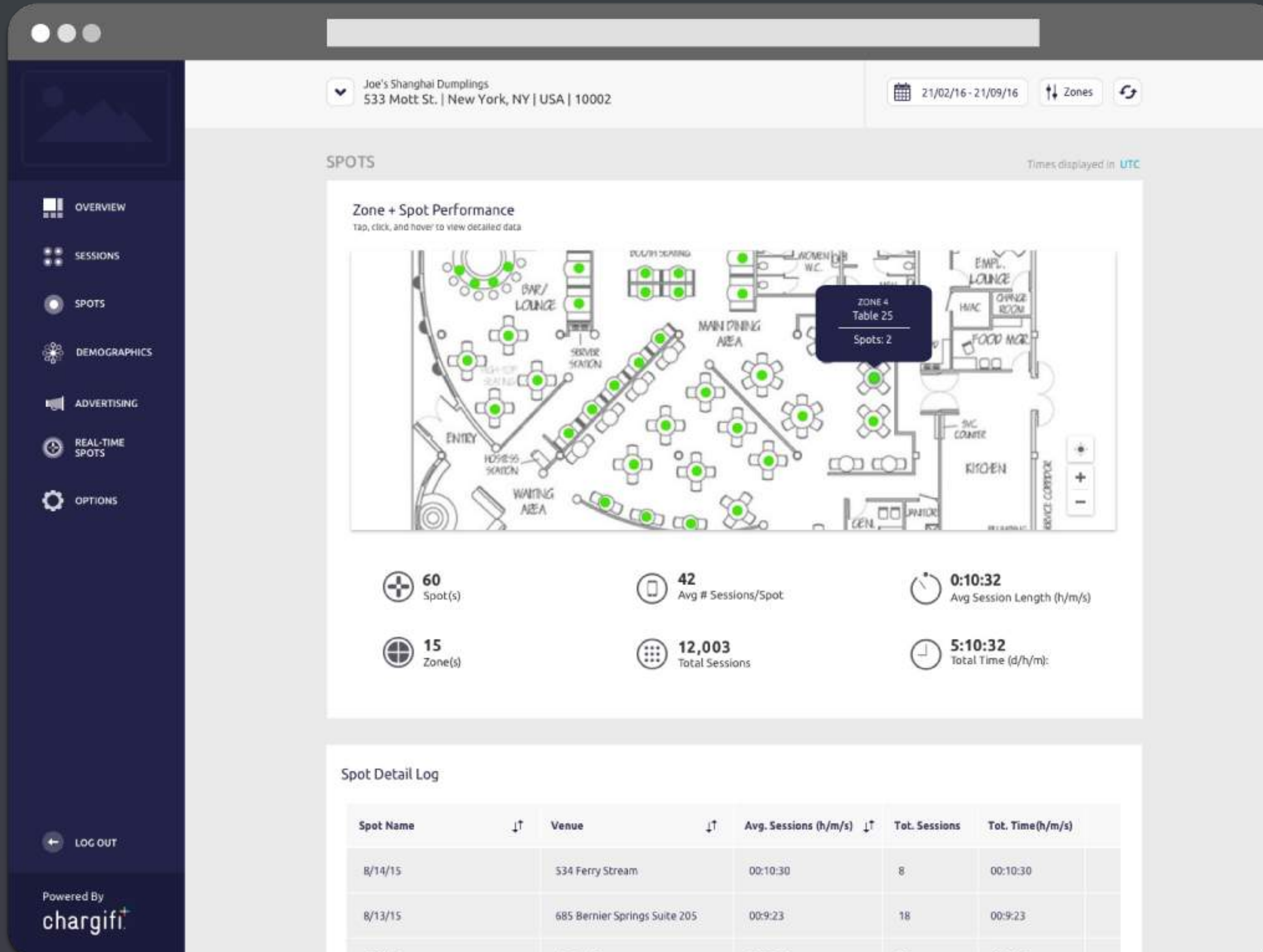
Chargifi works directly with transmitter manufacturers to make sure that deployments are always up to date. With wireless charging standards constantly evolving and new features being added, Chargifi automatically pushes the latest firmware to deployed transmitters to maximize performance, no site visit required.

Optimized Performance

Chargifi enabled transmitters automatically pull their configuration from the Chargifi Cloud, and communicate statistics and metadata back to a centralized database. As transmitter manufacturers learn from performance in the field, their devices get better, ensuring your clients enjoy a best-in-class wireless charging experience.



UPSELL YOUR CLIENTS



Cloud-Hosted Infrastructure

Guardian's session detection technology provides intel on how to optimize wireless charging deployments. Guardian identifies areas where charging density has peaked and suggests where venues could benefit from installing more hotspots.

Chargifi's expert support team is dedicated to helping clients close deals in any way they require, including joint calls, demos, and technical deep-dives.



CONTACT US

Helen Attia

SALES & MARKETING

M: +44 77 2915 3322

T: +44 (0) 20 3735 8784

E: Helen@chargifi.com

